

FEFLOW TRAINING SESSION



After the conference, you can join our introductory short-courses to learn more on MIKE SHE, the new FEFLOW, the usage of PEST in FEFLOW model calibration.

TRAINING PROGRAMME, FRIDAY 21 JUNE 2013		
9:00 to 12:00	Parameter Estimation with PEST	FEFLOW 6.1 Introduction
12:00	LUNCH	
1:00 to 3:30	MIKE SHE Introduction	FEFLOW 6.1 Introduction
	COFFEE & CLOSING	

Parameter Estimation with PEST:

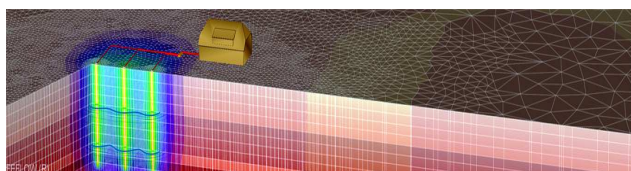
An introduction to model calibration using the new PEST-based Parameter Estimation tool in FEFLOW 6.1.

FEFLOW 6.1 Introduction:

An introduction to FEFLOW and its new GUI, and its application to the Australian groundwater guidelines (during afternoon session).

MIKE SHE Introduction:

An introduction to integrated hydrology modelling using MIKE SHE.



REGISTRATION

Please register your interest to the FEFLOW Down Under 2013 by email: mikebydhi.au@dhigroup.com

WORKSHOP FEES

Standard price (19 - 20 June) AUD \$400

Early bird registration (29 March) AUD \$300

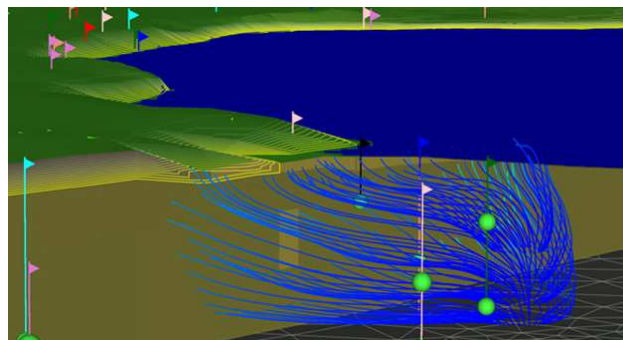
Training course (21 June) AUD \$200

Participants will be expected to bring their own laptop computers

Student registration (2 days) AUD \$200

Student who present research 50% subsidy
Approval through call for oral presentations

All prices are inclusive of GST



ORGANISER

DHI Australia
PO Box 3346
Australia Fair
Queensland, 4215
Tel: +61 (07) 5564 0916

mikebydhi.au@dhigroup.com
www.dhigroup.com
www.mikebydhi.com



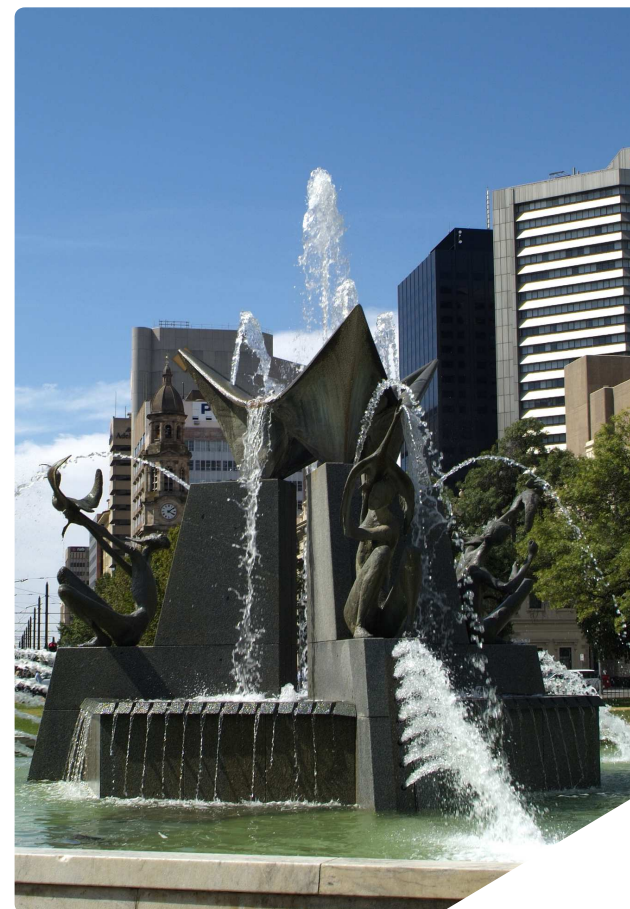
NATIONAL CENTRE
FOR GROUNDWATER
RESEARCH AND TRAINING

2ND AUSTRALIAN AND NEW ZEALAND FEFLOW USER GROUP MEETING, ADELAIDE

19-20 JUNE 2013

FEFLOW TRAINING SESSION

21 JUNE 2013



FEFLOW USER WORKSHOP

We, the groundwater modelling experts at DHI, would like to invite you and interested colleagues to attend the 2nd Australian and New Zealand FEFLOW User Workshop – FEFLOW Down Under.

FEFLOW has a long history of application in Australia and New Zealand. It counts over 100 active installations across the mining, engineering and government sectors and is one of the most widely used groundwater software packages across Australia and New Zealand. And with the release of FEFLOW 6.1 we take the industry standard for groundwater modelling software to a new level of productivity and usability.

The workshop will feature numerous opportunities for exchanging ideas, to meet with the FEFLOW developers improving your knowledge and extending your simulation skills in the application of FEFLOW.

The workshop will consist of two days of presentations including keynotes from leading industry speakers as well as the FEFLOW 6.1 development team, highlighting the new capabilities of FEFLOW 6.1 and explaining future development directions.

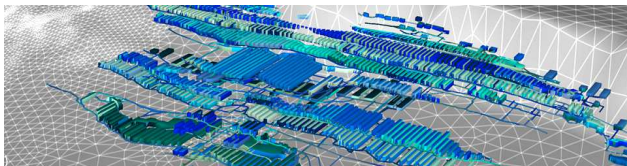
An additional training day will give both beginners and experienced users the possibility to explore our groundwater modeling software more in detail. This includes an introduction to FEFLOW and MIKE SHE, using FEFLOW with PEST and the usage of FEFLOW according to the groundwater modeling guidelines.

Highlights include:

- FEFLOW 6.1
- Meet with other FEFLOW users
- Excellent network opportunities

Meet the team at the User Group Meeting!

Discuss your new ideas with MIKE Software experts!



PROGRAMME

KEYNOTE PRESENTATIONS

Prof. Craig T. Simmons

Director of the National Centre for Groundwater Research and Training, Adelaide

Prof. Jochen Bundschuh

National Centre for Engineering in Agriculture
University of Southern Queensland (USQ)

Prof. John Doherty

Watermark Numerical Computing, Brisbane

Mr Michael Bennett

Technical Director - Hydrogeology
AECOM

FEFLOW DEVELOPMENT PRESENTATION

Dr. Fabien Cornaton

Head of FEFLOW Scientific Development
Groundwater Modelling Centre
DHI-WASY, Berlin, Germany

VENUE



The conference and training courses will be hosted at the Flinders University building, 182 Victoria square, in the heart of the Adelaide CBD.

KEY DATES

Abstract submission (extended)	March 11, 2013
Acceptance of abstracts	March 15, 2013
Early bird registration	March 29, 2013

USER PRESENTATIONS

CALL FOR PAPERS

Please email your abstract (up to 300 words) in MS Word format to FEFLOW User Group 2013 at mikebydhi.au@dhigroup.com. Please include information about the author(s), organisation(s) and email address(es).

Abstracts may be submitted to the Organising Committee before March 11, 2013.

PRESENTATION TOPICS

Contributions to any FEFLOW related topics and applications are welcome! Presentation topics will include, but are not limited to:

- **Environmental applications** (e.g., groundwater management, contamination transport)
- **Industrial applications** (e.g., mine-water management, geothermics and coal seam gas)
- **Special process modelling** (e.g., partially saturated porous-media, density-dependent flow)
- **Methods and technology** (e.g., user interfaces, 3D graphics, solvers, parallel computing, technical optimization, calibration and uncertainty analysis)
- **Software development** (coupling to other models, calibration/validation, linking with MIKE software)

