

COURSE SCHEDULE 2013

- SINGAPORE
- INDONESIA
- THE PHILIPPINES
- BRUNEI

BUILDING EXPERTISE





COURSE SCHEDULE 2013

		Singapore	Manila, Philippines	Jakarta, Indonesia	Bandar Seri Begawan, Brunei
ENVIRONMENT	COURSE				
	ENVIRONMENTAL ASPECTS OF DREDGING AND RECLAMATION Processes, regulations and management	4,11,25 July, 1 Aug	26-27 Sept	28-29 Aug	
	ENVIRONMENTAL IMPACT ASSESSMENT How to perform an EIA	27 Aug	25 Nov	To be announced	
COAST & MARINE	SHORELINE MANAGEMENT How to protect and develop your coasts!	3-4 Oct	25-26 Nov	23-24 Oct	11-12 Nov
	MIKE 21 & ECO Lab Marine modelling	9,16,23,30 Oct	25-26 Nov	20-21 Nov	13-14 Nov
FLOOD	FLOOD MANAGEMENT AND MODELLING How to manage and model inland flooding		24-25 Sept	28-29 Aug	
WR	MIKE SHE Integrated catchment modelling	17-18 Jul	26-27 Sept	23-24 Oct	
CITIES	MIKE URBAN WD Introduction to modelling of water distribution systems		25-26 Nov	20-21 Nov	
PRODUCT SAFETY & ENVIRONMENTAL RISK	GHS Classification and labelling of chemicals	August (to be announced)	26 Sept	28 Aug	11 Nov
	CHEMICALS COMPLIANCE & HAZARD COMMUNICATION A general introduction	23 Jul	25 Nov	24 Oct	12 Nov
	ENVIRONMENTAL HAZARD ASSESSMENT An introduction to ecotoxicology & environmental fate	9 Jul	27 Sept	24 Oct	11 Nov

We have more than **30 years** of experience in training courses and offer open courses as well as **tailor-made solutions**. Instead of attending one of our open courses, **we can customise** a course exactly to your company's needs.

Our courses are not restrained to the above mentioned venues. If there is a need, we can be **flexible** about the **locations and time** within the Asia Pacific-region.

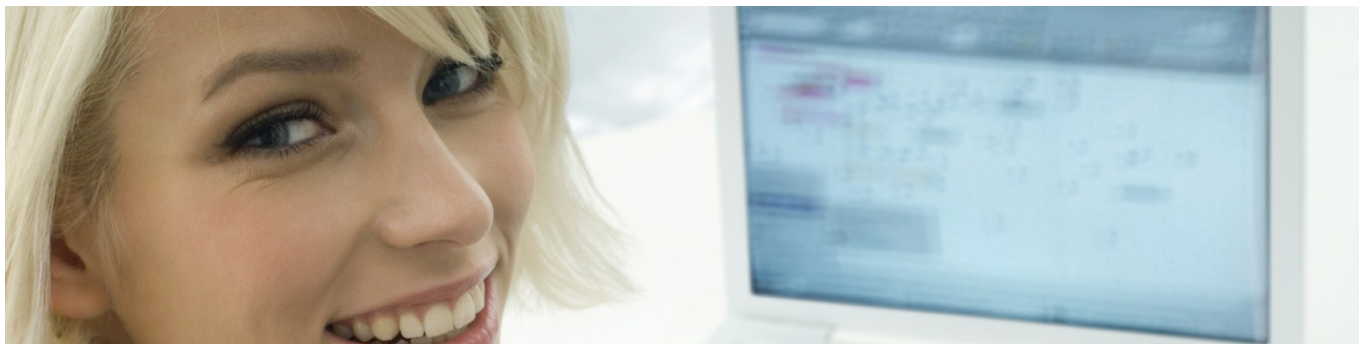
For further details, please contact

Sander Boot
spb@dhigroup.com
Singapore: +65 6777 6330



COURSE FLASHES

ENVIRONMENT	ENVIRONMENTAL ASPECTS OF DREDGING AND RECLAMATION Processes, regulations and management	This 2-day, thematic course gives you an understanding of the physical and chemical processes caused by and acting upon dredging and reclamation, the environmental impacts these activities may cause and an understanding of the available tools and procedures that can help to sustainably manage these projects within the local regulatory setting.	<ul style="list-style-type: none"> • Dredging and reclamation process and techniques • Environmental impacts and mitigation • Sediment properties and processes • EIA and stakeholder management • Optimisation of design and operations • Monitoring and management
	ENVIRONMENTAL IMPACT ASSESSMENT (EIA) How to perform an EIA	This 1-day, thematic course gives you an overview of the EIA-process and how to carry out an EIA. This course is cross cutting for all infrastructure and resources projects. RIAM software package (Rapid Impact Assessment Matrix) is introduced as a support tool for carrying out an EIA.	<ul style="list-style-type: none"> • Fundamentals of EIA • EIAs, standards and legislation • Pitfalls • Learning the steps of EIA • Introduction to the RIAM package
COAST & MARINE	SHORELINE MANAGEMENT How to protect and develop your coasts!	This 2-day, thematic course gives professionals involved in shoreline management an overview of coastal and estuarine dynamics. You are given an understanding of the available tools and procedures that can help create a sustainable and holistic management of the physical environment in the coastal zone. A field trip may be included if feasible.	<ul style="list-style-type: none"> • Introduction to coastal issues • Coastal processes and coastal classification • Climate changes and the coastal zone • Causes of coastal erosion and beach degradation • Shore and coast protection measures • Handling sedimentation at harbours • Introduction to numerical modelling and data management.
	MIKE 21 & ECO Lab Marine modelling	This 2-day, hands-on course introduces you to the basics of marine modelling. The first day gives an introduction to our MIKE 21 model for hydrological modelling (currents, sediment transport). The second day introduces the basic principles of the ecological model ECO Lab.	<ul style="list-style-type: none"> • What are challenges in the marine environment and how can modelling assist? • Basics of hydraulic modelling based on MIKE 21 • Basics of ecological modelling based on ECO Lab
FLOODING	FLOOD MANAGEMENT AND MODELLING How to manage and model inland flooding	In this 2-day, thematic course you learn the basics of integrated modelling and management of river and flood plain dynamics using MIKE FLOOD. Focus is on defining efficient models with emphasis on data requirements, optimal model schematisation and model stability, and on managing floods in pre-, per- and post-disaster stages.	<ul style="list-style-type: none"> • Pre-flood preparation (weather and flood forecasting, preparedness, institutional requirements) • During-flood management (early warning systems, evacuation plans, logistics, damage control) • Post-flood recovery (shorts term disaster-relief, long-term socio-economic recovery)
WATER RESOURCES	MIKE SHE Integrated catchment modelling	This 2-day, hands-on course provides you with an introduction to integrated surface – and groundwater modelling using MIKE SHE. On the basis of a case study you will build a three-dimensional groundwater flow and surface water model applying the most important programme functions, including pre-processing, simulation and result evaluation.	<ul style="list-style-type: none"> • Introduction to aspects of catchment modelling • Introduction to MIKE SHE and its graphical user interface • Setting up and running a MIKE SHE model • Results evaluation and visualisation
	MIKE URBAN WD Introduction to modelling of water distribution systems	This 2-day, hands-on course provides you with an introduction to data management and numerical modelling (EPANET) of water distribution networks. A general understanding of MIKE URBAN and its capabilities will be provided.	<ul style="list-style-type: none"> • Overview of MIKE URBAN WD • The MIKE URBAN application & project concept • Model elements and schematisation • Hydraulic and water quality analysis
PRODUCT SAFETY & ENVIRONMENTAL RISK	GHS Classification and labelling of chemicals	Do you need to classify chemical mixtures and get familiar with the new pictograms? Would you like to be able to verify classifications and labels from your suppliers? Participate in our course and you will get the answers!	<ul style="list-style-type: none"> • The basic principles for classification of pure substances • Classification and labelling of chemical mixtures according to the current methods of calculation • ChemManager® IT-tool for SDS production
	CHEMICALS COMPLIANCE & HAZARD COMMUNICATION A general introduction	This 1-day course gives you gives you a basic introduction to roles and obligations of manufacturers and users of chemicals. The course is not a classification and labelling course, please refer to our GHS training course.	<ul style="list-style-type: none"> • Roles and obligations • Classification and labelling • Marketing restrictions • Chemical Inventories and where to find data • ChemManager® IT-tool for Chemicals management and SDS
	ENVIRONMENTAL HAZARD ASSESSMENT An introduction to ecotoxicology & environmental fate	This 1-day course gives you a brief introduction to ecotoxicology and environmental fate. The course does not refer to a specific industry or product line.	<ul style="list-style-type: none"> • The fundamentals of ecotoxicology • Areas of application • Testing challenges and test guidelines • PBT assessment • Course subjects deal with pharmaceuticals, biocides or pesticides, surfactants, fragrances, offshore chemicals, etc.



About our courses

Our courses are based on the challenges you experience in your daily work, which we combine with our unique expertise in dealing with challenges in water environments, toxicology and industry. This ensures courses that are immediately applicable for your day-to-day work challenges.

We have more than 30 years of experience in courses and training, and offer open courses as well as tailor-made solutions. Approximately one third of our course participants chose a tailor-made solution.

If you have a particular topic that you would like to discuss, we will try to adapt the course to your needs. If so, please contact us no later than 2 weeks prior to the start of the course. After each course, including tailor-made courses, participants receive a training certificate.

Tailor-made, on site courses

Instead of attending one of our open courses, we can customise a course exactly to your company needs. Courses held on your premises will be adapted to your specific challenges and to the needs of your employees, giving you the full benefit.

Instructors - who make a difference

Skilled instructors are essential for a successful course, and our instructors are all highly qualified professionals in their fields.

In addition to their profound insight into the subject matter, our instructors understand the challenges of your daily work – from government regulations to planning and executing projects.

In short - when it comes to combining knowledge, expertise and experience, we believe our instructors offer the state of the art in training.

Registration

The standard registration deadline is 4 weeks prior to the course date or as long as there are seats available. Please note that registration is binding 4 weeks prior to commencement of the course.

If you are prevented from participating, you are free to transfer your registration to a colleague. Alternatively, you or one of your colleagues may choose to participate in another course.

We reserve the right to change time and venue of a course, and to cancel courses in case of too few participants.

Language

The course language is English. All training material is provided in English.

Course fees

Please refer to the detailed course descriptions for information on fees. All courses include coffee, snacks and course material.

Discounts*

- 10% if your company has a valid Service Maintenance Agreement on a MIKE by DHI product
- 25% (of original course fee) when signing up three or more employees for the same course

Note: Only possible to make use of 1 offer of discount - discounts cannot be accumulated

Contact

For detailed information on course fees, discounts, venues and registration in the individual countries, please contact **Sander Boot** - spb@dhigroup.com

THE ACADEMY by DHI offers a palette of training courses and capacity building packages in the field of water as well as in chemicals regulation and toxicology. Please consult our website for complete listing as well as latest updates of our Global Course Calendar: www.dhigroup.com/training

